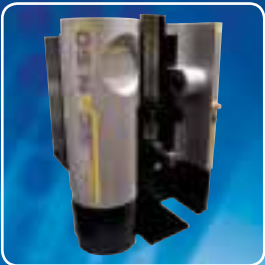




# **BOWERS GROUP**

## THE ESSENTIAL METROLOGY CATALOGUE 16/17



Partners in Precision

Software

## ISO 9001:2015 – Quality Guaranteed

In 2016 Bowers achieved the latest **ISO 9001:2015** Quality Management Systems Standard at its Bradford manufacturing facility. This prestigious certification is a true testament to Bowers' dedication to the highest levels of quality management and customer satisfaction. ISO 9001:2015 is the newest update to the quality management system standard, which provides an integrated approach to quality management and continual improvement. This, in conjunction with Bowers' existing UKAS accreditation to ISO/IEC 17025:2005, ensures its customers can have complete confidence that the Bowers range of products is designed and manufactured to the highest standard.





BOWERS GROUP

## Bowers Group

As a leading supplier of quality metrology instruments to organisations throughout the world, Bowers Group has developed into a respected global leader in the field of measurement. Our first-class reputation has been built on the continuing Group ethos of striving for excellence in both the comprehensive range of products that we supply and the many quality services that we provide to our customers. The Group's aim is to build on its hard-won reputation and continue to exceed customers' expectations.

Reflecting the all-inclusive nature of our products and services, Bowers UK provides British industry with the widest choice of cost effective, quality measuring instruments currently available. Supplementing Bowers' own famous range of gauges, our enviable 'sole UK agent' status means that we can offer superior products from many pre-eminent metrology companies, such as Trimos, Sylvac, Gagemaker, Innovatest, ACCRETECH and Wyler. Bowers' diverse range of quality measuring instruments allows us to offer cost effective solutions to UK industries' measuring challenges. Helping in the decision making process, our network of skilled Sales Engineers is happy to give on-site demonstrations of our full product range.



## Baty International

Baty International is one of the world's leading manufacturers of Optical Profile Projectors, Co-ordinate Measuring Systems and Gauging Products. Baty's product range includes two dimensional (profile measuring) equipment and full 3 dimensional (coordinate measuring) systems. Baty also services and calibrates contact and non contact dimensional measuring equipment. Baty products are for industrial, manufacturing and professional use, on the shop-floor, in tool rooms, and in other areas where precision measurement is critical.



## Moore & Wright

Founded in 1906 by innovative young engineer Frank Moore, Moore & Wright has been designing, manufacturing and supplying precision measuring equipment to global industry for over 100 years. With roots fixed firmly in Sheffield, the company began by manufacturing a range of calipers, screwdrivers, punches and other engineer's tools.

Now part of Bowers Group, Moore & Wright continues its commitment to supplying industry with high quality, affordable products. Its ongoing pledge to research and development ensures that Moore & Wright remains at the forefront of global innovation.



## CV Instruments

With the largest selection of portable and bench hardness testers currently available within the UK, the CV arm of Bowers Group has evolved into an all-inclusive material testing quality instrument supplier, with cost effective solutions to coating thickness, surface finish and many other disciplines now available.

Bowers is also exclusive UK reseller for the following leading metrology brands:





# Sylvac Vmux Bluetooth Device Management Software



## Features

- 32 available channels
- A maximum of 4 Bluetooth® Low Energy dongles
- 8 devices by dongle
- Instruments can also be connected by USB cable
- Application is compatible with Windows XP, Windows 7 and Windows 8



### SYLVAC VMUX BLUETOOTH DEVICE MANAGEMENT SOFTWARE

Code No	Description
30-981-7160	Vmux Bluetooth Device Management Software

# Sylvac Sylconnect

Software allowing the connection of 16 Sylvac handtools to a computer by USB cable. No specific interface is required! The instruments can be directly connected to the USB port or via USB-Hub available on the market. Automatic recognition and USB port setting for every new connected instrument. A digital or analog window is automatically created for each instrument. Jpeg picture import function and window value resizing. Direct values export to Excel worksheet. Possibility to connect one or many USB footpedals to drive different instruments.



Multi channels screen with tolerances displayed in colour



Automatic instrument detection and configuration window



Tolerances setting



Multi channels screen displayed in analog mode

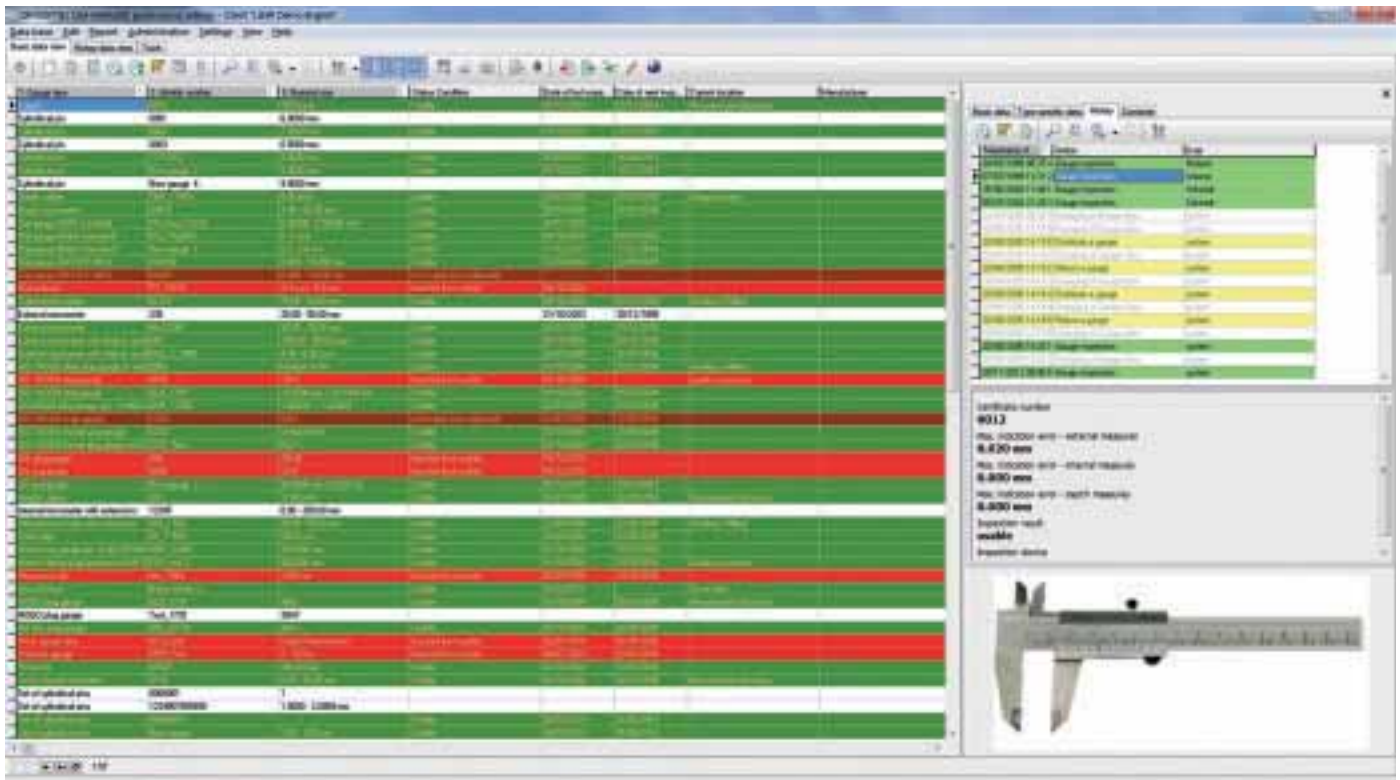
### SYLCONNECT

Code No	Description
30-981-7110	Sylconnect Licence (Single Licence)
30-981-7111	Sylconnect Dongle (Single Licence)
30-926-7020	USB Footswitch
30-926-7021	Heavy Duty USB Footswitch



## Gauge Management & Calibration Software

The inspired QMSOFT (Quality Management Software) system is a comprehensive, user-friendly gauge management software programme, enabling the efficient administration of a company's measuring instrument inventory, or the effective management of commercial calibration laboratory gauge throughput. Add on individual modules relating to specific gauge categories render this powerful software one of the most comprehensive and flexible currently available.



### QMSOFT Main Features

- Gauge management and gauge inspection are integrated into the system with equal importance
- Specially developed modules make possible the calibration of all common gauges using any national, international or user defined standard. It is therefore not necessary to define an inspection procedure for each gauge type
- Extensive support for directly connected measuring devices including Trimos & Sylvac calibration instruments
- All normal sizes and tolerances for gauges are calculated by the program (with relevant modules installed)
- Inspection certificates may be customised for individual presentation saved as html, doc or pdf files

### QM-MANAG - The Gauge Management system

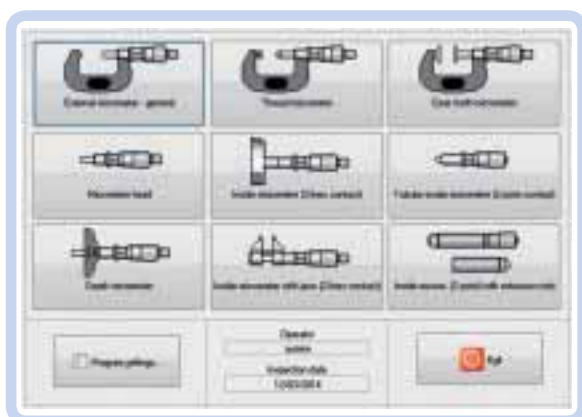
Code No 20-3250

QM-MANAG provides all the functions to manage the complete inventory of measuring tools and gauges. It also allows the creation of identification cards, search and reminder lists, as well as histories of all measuring tools and gauges.

For more information visit [www.machine-dro.co.uk](http://www.machine-dro.co.uk)



The QMSOFT modules allow the operator to calibrate all types of measuring instruments against major international standards or to create and use more practical in-house standards for each gauge within the database. The easy to use, modular nature of QMSOFT allows the user to customise the software to match their own requirements.



### QM-PLAIN - plain gauge inspection

Code No 20-3251

QM-PLAIN supports the inspection of master rings and ring gauges, plug gauges and snap gauges. Using the selected gauge type and the nominal value provided (e.g. 2H7), the program calculates the gauge tolerances.

Includes DIN, ANSI/ASME and British Standards.

### QM-THREAD - thread gauge inspection

Code No 20-3252

QM-THREAD calculates the expected size over wires or balls and the pitch diameter depending on the measurement method. The program calculates the nominal sizes and tolerances for varied international standards including:

- ISO metric threads BS 3643
- Unified threads to ANSI / ASME
- Pipe threads to BS 2779
- Steel Conduit threads to DIN 40431
- Trapezoidal threads to DIN 103
- Whitworth threads BS 84:1956
- Helicoil threads to BOELLHOFF standard
- Unified threads to BS 1580
- Unified Helicoil to BOELLHOFF standard
- Buttress threads to DIN 513
- MJ threads to DIN ISO 5855
- NPSM pipe threads to ANSI / ASME
- Threads for valves to DIN 7756 / ETRTO V.7
- ACME screw threads to ASME / ANSI
- STUB ACME screw threads to ASME / ANSI
- Buttress inch screw threads 7°/45° to ANSI
- Thread gauges according to factory standard
- Plus many others

### QM-DIAL - dial gauge inspection

Code No 20-3255

QM-DIAL supports the inspection of dial gauges, dial indicators and dial test indicators. Standards supported include:

- Dial gauges to DIN 878
- Dial indicators to DIN 879
- Dial test indicators to DIN 227
- Dial gauges to BS 907
- Dial indicators to BS 2795

### Additional modules include:

- QM-CALIP - Code No 20-3256 - inspection of calipers
- QM-MICRO - Code No 20-3258 - inspection of micrometers
- QM-PINS - Code No 20-3257 - inspection of pin gauges
- QM-EMP4W - Code No 20-3261 - inspection of gauge blocks
- QM-RULE - Code No 20-3259 - inspection of rules
- QM-TORQ - Code No 20-3249 - inspection of torque gauges
- QM-TTAP - Code No 20-3248 - inspection of tapered threads



**BOWERS GROUP**



**baty**



**Machine DRO**

Pindar Road, Hoddesdon, Hertfordshire, EN11 0BZ

**Tel:** 01992 455 921

**Email:** [sales@machine-dro.co.uk](mailto:sales@machine-dro.co.uk)

**Website:** [www.machine-dro.co.uk](http://www.machine-dro.co.uk)

