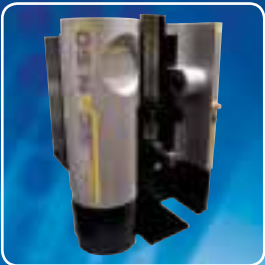




BOWERS GROUP

THE ESSENTIAL METROLOGY CATALOGUE **16/17**



Partners in Precision

Cables & Accessories

ISO 9001:2015 – Quality Guaranteed

In 2016 Bowers achieved the latest **ISO 9001:2015** Quality Management Systems Standard at its Bradford manufacturing facility. This prestigious certification is a true testament to Bowers' dedication to the highest levels of quality management and customer satisfaction. ISO 9001:2015 is the newest update to the quality management system standard, which provides an integrated approach to quality management and continual improvement. This, in conjunction with Bowers' existing UKAS accreditation to ISO/IEC 17025:2005, ensures its customers can have complete confidence that the Bowers range of products is designed and manufactured to the highest standard.





BOWERS GROUP

Bowers Group

As a leading supplier of quality metrology instruments to organisations throughout the world, Bowers Group has developed into a respected global leader in the field of measurement. Our first-class reputation has been built on the continuing Group ethos of striving for excellence in both the comprehensive range of products that we supply and the many quality services that we provide to our customers. The Group's aim is to build on its hard-won reputation and continue to exceed customers' expectations.

Reflecting the all-inclusive nature of our products and services, Bowers UK provides British industry with the widest choice of cost effective, quality measuring instruments currently available. Supplementing Bowers' own famous range of gauges, our enviable 'sole UK agent' status means that we can offer superior products from many pre-eminent metrology companies, such as Trimos, Sylvac, Gagemaker, Innovatest, ACCRETECH and Wyler. Bowers' diverse range of quality measuring instruments allows us to offer cost effective solutions to UK industries' measuring challenges. Helping in the decision making process, our network of skilled Sales Engineers is happy to give on-site demonstrations of our full product range.



Baty International

Baty International is one of the world's leading manufacturers of Optical Profile Projectors, Co-ordinate Measuring Systems and Gauging Products. Baty's product range includes two dimensional (profile measuring) equipment and full 3 dimensional (coordinate measuring) systems. Baty also services and calibrates contact and non contact dimensional measuring equipment. Baty products are for industrial, manufacturing and professional use, on the shop-floor, in tool rooms, and in other areas where precision measurement is critical.



Moore & Wright

Founded in 1906 by innovative young engineer Frank Moore, Moore & Wright has been designing, manufacturing and supplying precision measuring equipment to global industry for over 100 years. With roots fixed firmly in Sheffield, the company began by manufacturing a range of calipers, screwdrivers, punches and other engineer's tools.

Now part of Bowers Group, Moore & Wright continues its commitment to supplying industry with high quality, affordable products. Its ongoing pledge to research and development ensures that Moore & Wright remains at the forefront of global innovation.



CV Instruments

With the largest selection of portable and bench hardness testers currently available within the UK, the CV arm of Bowers Group has evolved into an all-inclusive material testing quality instrument supplier, with cost effective solutions to coating thickness, surface finish and many other disciplines now available.

Bowers is also exclusive UK reseller for the following leading metrology brands:





Cables & Accessories

A complete listing of cables and output accessories to suit the Bowers Metrology range of instruments.

CABLES

| Code No | Description | PC Connectivity | Length | Output | Functions |
|----------------|---|-----------------|---------|---|-------------------------------|
| 30-926-5521 | Sylvac Opto Simplex Serial Data Cable | 9 Pin Female | 2m | All (Non IP65) Opto outputs | Data Send Only |
| 30-926-5521A | Sylvac Opto Simplex with Footswitch | 9 Pin Female | 2 | All (Non IP65) Opto outputs | Data Send Only |
| 30-926-5520 | Sylvac Opto Simplex | 9 Pin Female | 15 | All (Non IP65) Opto outputs | Data Send Only |
| 30-926-6521 | Sylvac Opto Duplex | 9 Pin Female | 2 | All (Non IP65) Opto outputs | Bi Directional Connectivity |
| 30-926-6521A | Sylvac Opto Duplex with Footswitch | 9 Pin Female | 2 | All (Non IP65) Opto outputs | Bi Directional Connectivity |
| 30-926-6535 | Sylvac Opto Duplex | 9 Pin Female | 15 | All (Non IP65) Opto outputs | Bi Directional Connectivity |
| 30-926-6621 | Sylvac Opto Duplex | USB | 2 | All (Non IP65) Opto outputs | Bi Directional Connectivity |
| 30-905-4516 | Powered Serial Data Output Cable | 9 Pin Female | 2 | All IP65 Opto Outputs | Bi Directional Connectivity |
| 30-905-4519 | Sylvac Powered Opto Duplex | 9 Pin Female | 15 | All IP65 Opto Outputs | Bi Directional Connectivity |
| 30-926-6821 | Powered Opto / USB | USB | 2 | All IP65 Opto Outputs | Bi Directional Connectivity |
| 30-925-1151 | Sylvac Power Booster | 9 Pin Female | 2 | for RS232 Cable | Continuous Power Supply |
| 30-925-1143 | Sylvac Power Booster with Footswitch (for Bi-Directional Cables Only) | 9 Pin Female | 3 | for RS232 Cable | Continuous Power Supply |
| 30-926-5516 | Sylvac Power Supply (To replace battery) | N/A | 3 | All (Non IP65) Opto outputs | |
| 30-926-6723 | Proximity Serial Data Output Cable | 9 Pin Female | 3 | All IP67 Proximity Outputs | Bi Directional Connectivity |
| 30-926-6721 | Sylvac Proximity USB | USB | 3 | All IP67 Proximity Outputs | Bi Directional Connectivity |
| 30-926-USB | Serial to USB adaptor | USB | 0.01 | RS232 Cable | Converts Serial Output to USB |
| 30-925-5608 | RS232 connecting cable | 9 Pin Female | 2 | D50S, D60S, D80S, D100S, D104 PC, All Z Cal Height Gauges, Diavite (Up to DH7) Trimos V & VL Series, Altia, Altia Premium, Trimos Horizon H series, Sylvac MBus, 55-2045-AEP column | Bi Directional Connectivity |
| 30-925-5609 | Straight Connection 9 Pin Male - 9 Pin Female | 9 Pin Female | 3 | D50S, D60S, D80S, D100S, D104 PC, All Z Cal Height Gauges, Diavite (Up to DH7) Trimos V Series, Altia, Altia Premium, Trimos Horizon H series, Sylvac MBus, 55-2045-AEP column | Bi Directional Connectivity |
| 30-926-5521 | Sylvac 9 Pin Female to Digimatic | Digimatic | 2 | D50S, D60S, D80S, D100S, D104 PC, All Z Cal Height Gauges, Diavite (Up to DH7) Trimos V Series, Altia, Altia Premium Height Gauges and Trimos Horizon H series | Bi Directional Connectivity |
| 30-904-4101 | Foot pedal | N/A | 2 | D50S, D60S, D80S, D100S, D104PC, D300S, D302, D304, D70S, D400S All Z Cal, V Series and Altia Height Gauges | |
| 30-904-4102 | Footswitch | N/A | 2 | Sylvac D70I, D70H only | |
| 30-926-7020 | Heavy Duty USB Footswitch | | 2 Metre | Software Wedge, Sylconnect, VMux | |
| 20-USB | Standard A-B USB Cable | USB Receiver | 2 | Trimos Mestra, Vectra, D200S, D300S, D400S | Bi Directional Connectivity |
| 30-926-6001 | Mini USB - USB | USB Receiver | 2 | Sylvac Hi-cal | |
| 25-604-014 | Wireless Opto Module | USB Receiver | N/A | All (Non IP65) Opto outputs | Data Send Only |
| 25-604-013 | Wireless Powered Opto Module | USB Receiver | N/A | All IP65 Opto Outputs | Data Send Only |
| 25-604-064 | Wireless Proximity Module Transmitter | USB Receiver | N/A | All IP67 Promimity Outputs | Data Send Only |
| MW-Y100/700USB | Data Cable-USB to suit all DABS products | | | | |

Cables & Accessories

CABLES CONTINUED

| Code No | Description | PC Connectivity | Length | Output | Functions |
|-------------|--|-----------------|--------|--|-----------------------------|
| 25-604-004 | Adapter RS232 / Opto (Requires 25-604-014) | USB Receiver | N/A | All Sylvac 9 Pin Connectors | Data Send Only |
| 25-604-008 | RS232 Transmitter Module | USB Receiver | N/A | All 9 Pin Static Instrument Connectors | Data Send Only |
| 25-604-007 | Wireless Digimatic (Mitutoyo) Module | USB Receiver | N/A | Can be connected to Standard Instrument cable | Data Send Only |
| 25-604-011 | Wireless Digimatic (Mitutoyo) Module | USB Receiver | N/A | Can be connected directly to Calipers and Dial Gauges | Data Send Only |
| 25-604-006 | Wireless Mahr Module | USB Receiver | N/A | All Mahr Connect Instruments | Data Send Only |
| 25-604-001 | USB Receiver | USB Receiver | N/A | Connect to PC Only | Data Send Only |
| 55-PC2311 | RS232 cable (9p/M/F) | | | | |
| 20-4070 | USB Memory Stick | 9 Pin Female | 2 | Trimos Vectra and Mestra to PC | Data Send Only |
| 20-25019 | Trimos THV to PC Cable | 9 Pin Female | 2 | Heidenhein QC110 to PC | Data Send Only |
| 60-6517 | WYLER Zerotron Sensor to LM2000 WYLER Clinotronic, Clino 2000 to LM2000 or Adaptor Cable | N/A | 2.5 | Zerotronic Sensor to LM2000 or Transceiver Converter Clinotronic, Clino 2000 to LM2000 or Adaptor | Bi Directional Connectivity |
| 60-6519 | WYLER Zerotron Sensor to LM2000 WYLER Clinotronic, Clino 2000 to LM2000 or Adaptor Cable | N/A | 5 | Zerotronic Sensor to LM2000 or Transceiver Converter Clinotronic, Clino 2000 to LM2000 or Adaptor | Bi Directional Connectivity |
| 60-6519A | WYLER Zerotron Sensor to LM2000 WYLER Clinotronic, Clino 2000 to LM2000 or Adaptor Cable | N/A | 10 | Zerotronic Sensor to LM2000 or Transceiver Converter Clinotronic, Clino 2000 to LM2000 or Adaptor | Bi Directional Connectivity |
| 60-6172A | WYLER Clinotronic RS485 /RS232 Adaptor | 9 Pin Female | N/A | Clinotronic | Bi Directional Connectivity |
| 60-6657 | WYLER NT to Levelmeter 2000 | N/A | 2.5 | NT Level to LM2000 | |
| 60-6662 | WYLER Levelmeter 2000 and CLINO 2000 to PC | 9 Pin Female | 2 | Levelmeter 2000 to PC | |
| 60-6617 | WYLER Blue Level, Blue Level Basic, Blue Meter, Blue Meter Basic, Blue TC, Blue Clino | N/A | 2.5 | Blue Meter Blue Series Universal | |
| 60-232USB | USB Adaptor WYLER | | | | |
| RAN0004 | RS232 PC Connection Cable | 9 Pin Female | 2 | Rangemaster to PC | Data Send Only |
| W-TA510 | Impact HT to PC | 9 Pin Female | 2 | Impact Series to PC | Data Send Only |
| W-WRT150PC | CVI WRT150 (CVR135) Surface Finish Tester | 9 Pin Female | 2 | WRT150 (CVR150) to PC | Data Send Only |
| W-TR-200CA | CVI TR200 Surface Finish Tester (Included with Tester) | 9 Pin Female | 2 | TR200 to PC | Data Send Only |
| 30-901-5042 | Replacement Sylvac Probe Cable | N/A | 1.5 | P2B [Pre 2011]and P5 | |
| 30-901-5002 | Replacement Sylvac Probe Cable | N/A | 1.5 | P10 | |
| 30-901-5012 | Replacement Sylvac Probe Cable | N/A | 1.5 | P25 | |
| 30-901-5022 | Replacement Sylvac Probe Cable | N/A | 1.5 | P50 | |
| 30-901-5052 | Replacement Sylvac Probe Cable | N/A | 1.5 | P2BL and P5L | |
| 30-901-5032 | Replacement Sylvac Probe Cable | N/A | 1.5 | P10L | |
| 30-901-9993 | Extension Cable (affects accuracy calculation) | N/A | 3 | All Sylvac Probes | |

UTILITY SOFTWARE AND BLUETOOTH CONNECTIVITY

| Code No | Description |
|-------------|--|
| 30-981-7100 | USB Dongle BT Smart for for PC/D300S/D400S |
| 30-981-7111 | Sylconnect Dongle (Single Licence) |
| 30-981-7161 | Sylvac VMux Dongle (Single Licence) |



BOWERS GROUP



baty



Machine DRO

Pindar Road, Hoddesdon, Hertfordshire, EN11 0BZ

Tel: 01992 455 921

Email: sales@machine-dro.co.uk

Website: www.machine-dro.co.uk

