

Tapping Equipment Catalogue

JANUARY 2009

Allendale Electronics Ltd

43 Hoddesdon Industrial Centre, Pindar Road, Hoddesdon, Hertfordshire. EN11 0FF

W: www.machine-tapping.co.uk E: sales@machine-tapping.co.uk

T: +44 (0)1992 450780 F: +44 (0)1992 450781

Contents

3	Budget tapping arm with collet set (TA-3-12). Working reach of 900mm. M3 to M12 tapping range.	13	Auto-Reversing Tapping Heads.
4	Tapping Arm TA-950 series. Working reach of 950mm. M3 to M12 tapping range.	14	Arbours and Adaptor Sleeves.
5	Tapping Arm TA-1000 series. Working reach of 950mm. M5 to M22 tapping range.	15	Work Holding.
6	Tapping Arm TA-1600 series. Working reach of 1600mm. M5 to M22 tapping range.		
7	Tapping Arm TA-1900 series. Working reach of 1900mm. M5 to M22 tapping range.		
8	TYPE 1 Quick Change Collets.		
9	TYPE 1 Quick Change Adaptors.		
10	TYPE 2 Quick Change Collets.		
11	TYPE 2 Quick Change Adaptors.		
12	Quick Change Tooling.		

TA-3-12 Budget - Series

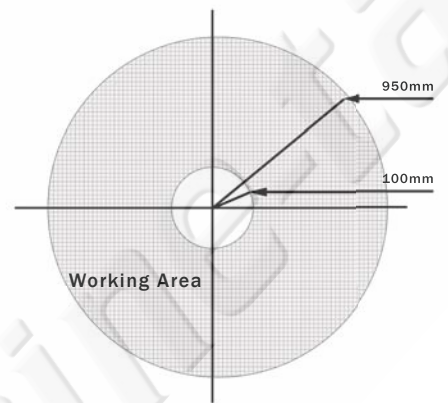
Our entry level budget tapping arm is supplied complete with a high torque pneumatic motor, quick change chuck, metric collet set, air regulator, filter and lubricator. Providing a quick and simple solution for tapping in the workshop.

The machine taps are held in a quick change collet system driven by the pneumatic motor. Each collet has a ratchet clutch, the torque is preset for each size of tap, removing the need to make any adjustments when changing between tapping size.

- 900mm reach.
- Reduce tap breakage.
- Repeatably parallel tapping.
- Removes tapping operations from machine tools.
- Simple operation.
- Low maintenance.
- Easy to re-align with threaded holes to remove contamination after painting or coating processes.
- Blind or through hole tapping.



Included;
 Mounting base,
 Articulated arm,
 Pneumatic motor,
 Quick change chuck,
 Collet set
 Air regulator & gauge,
 Air filter (with auto drain),
 Air line lubricator.



The pneumatic motor can be set at any angle between the vertical and horizontal position. There is a locating peg for the vertical position.

Collet set supplied includes;
 M3, M4, M5, & M6 collets use ISO 529 machine taps
 M8, M10 & M12 collets use ISO2283 or BS949 long shank

Model Number	Tapping Range	Work Area (mm)		RPM	Collet Type	Weight (Kg)
		Min	Max			
TA-3-12	M3 to M12	100	900	400	Compatible with Type 1	16

TA 950 - Series

The TA 950 series are available in two different tapping ranges, with a working reach of 950mm. The motor is held rigid and is counter balanced by the gas strut mounted in the arm. This provides little operator fatigue and ensures consistent results.

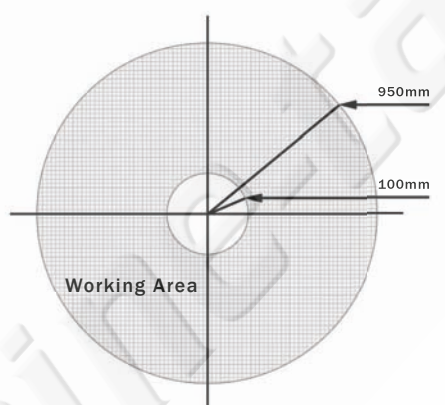
The machine taps are held in a quick change collet system driven by the pneumatic motor. Each collet has a ratchet clutch to prevent tap breakage and allow blind hole tapping. The torque is preset for each size of tapping collet, this can be adjusted if required. The quick release system allows the collet to be removed and the next collet inserted rapidly.

- 950mm reach.
- Pneumatic motor, quick change chuck, air regulator, filter, lubricator, air hose (regulator to motor) & mounting base included.
- Reduce tap breakage.
- Repeatable parallel tapping.
- Removes tapping operations from machine tools
- Low maintenance.
- Easy to re-align with threaded holes to remove contamination after painting or coating processes.
- Blind or through hole tapping.
- Adjustable angle head option available.



Included;
 Mounting base,
 Articulated arm,
 Pneumatic motor,
 Quick change chuck,
 Air regulator & gauge,
 Air filter (with auto drain),
 Air line lubricator.

Collets are not included.
 Please see collet section for more details.



Model Number	Tapping Range	Work Area (mm)		RPM	Collet Type	Weight (Kg)
		Min	Max			
TA-950-8	M2 to M8	100	950	700	Type 1	18
TA-950-12	M3 to M12	100	950	400	Type 1	18

TA 1000 - Series

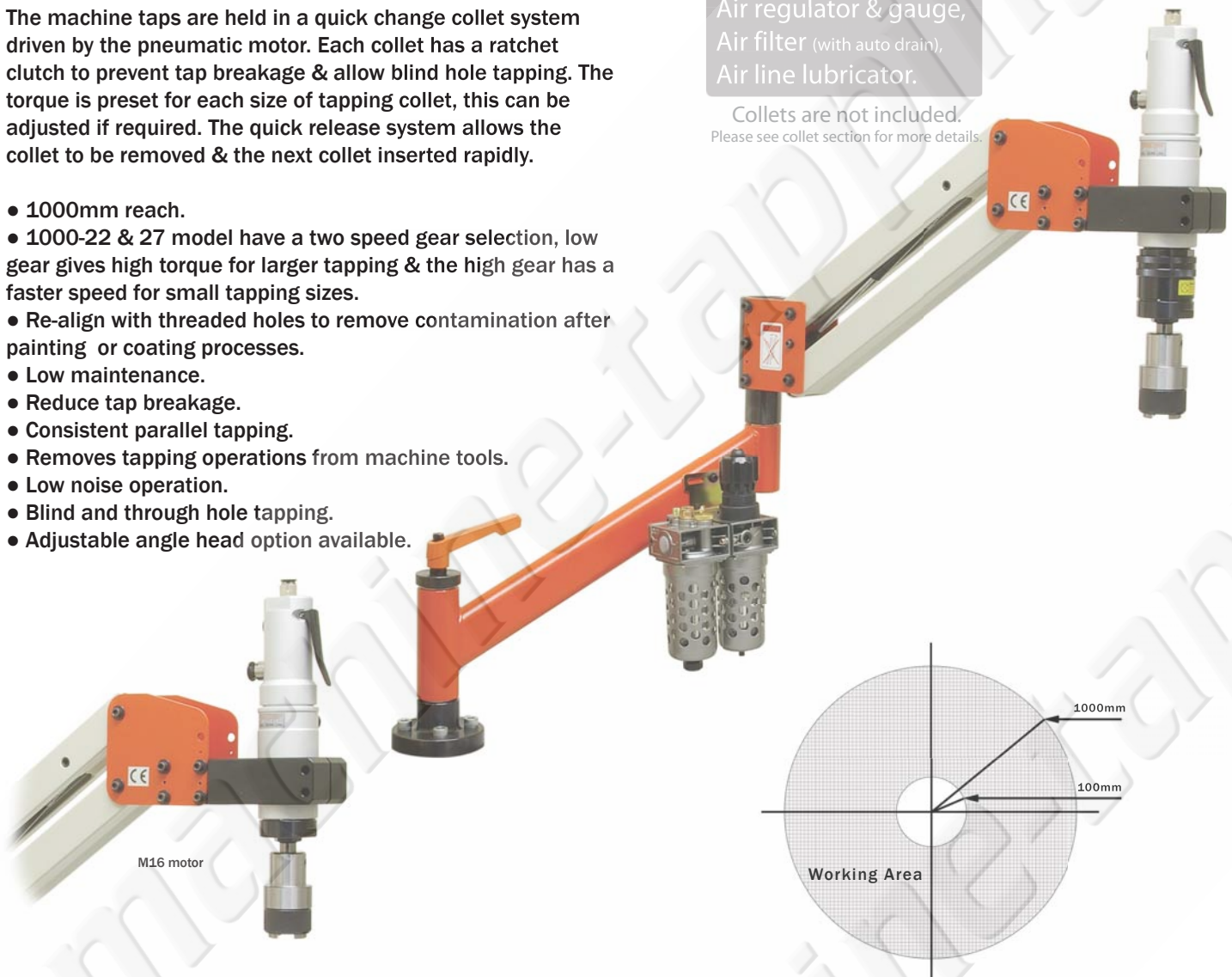
The TA 1000 series are available in three different tapping ranges, with a working reach of 1000mm. The heavy duty arm and motor selection give more versatility with a wide tapping range available. The motor is held rigid and is counter balanced by the gas strut mounted in the arm. This provides little operator fatigue and ensures consistent results.

The machine taps are held in a quick change collet system driven by the pneumatic motor. Each collet has a ratchet clutch to prevent tap breakage & allow blind hole tapping. The torque is preset for each size of tapping collet, this can be adjusted if required. The quick release system allows the collet to be removed & the next collet inserted rapidly.

- 1000mm reach.
- 1000-22 & 27 model have a two speed gear selection, low gear gives high torque for larger tapping & the high gear has a faster speed for small tapping sizes.
- Re-align with threaded holes to remove contamination after painting or coating processes.
- Low maintenance.
- Reduce tap breakage.
- Consistent parallel tapping.
- Removes tapping operations from machine tools.
- Low noise operation.
- Blind and through hole tapping.
- Adjustable angle head option available.

Included;
 Mounting base,
 Articulated arm,
 Pneumatic motor,
 Quick change chuck,
 Air regulator & gauge,
 Air filter (with auto drain),
 Air line lubricator.

Collets are not included.
 Please see collet section for more details.



Model Number	Tapping Range	Work Area (mm)		RPM	Collet Type	Weight (Kg)
		Min	Max			
TA-1000-16	M5 to M16	100	1000	300	Type 2	29
TA-1000-22	M5 to M22	100	1000	120 / 300	Type 2	29
TA-1000-27	M5 to M27	100	1000	70 / 120	Type 2	29

TA 1600 - Series

The TA 1600 series with a working reach of 1600mm. The extra reach of this this arm gives extra versatility in the machine shop. The motor is held rigid and is counter balanced by the gas strut mounted in the arm. This provides little operator fatigue and ensures consistant results.

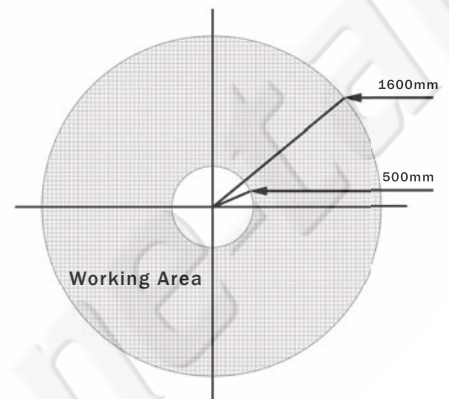
The machine taps are held in a quick collet system pneumatic motor. Each collet has a ratchet clutch to prevent tap breakage and allow blind hole tapping. The torque is preset for each size of tapping collet, this can be adjusted if required. The quick release system allows the collet to be removed and the next collet inserted rapidly.

- 1600mm reach.
- Reduce tap breakage.
- Removes tapping operations from machine tools.
- Low maintenance.
- Consistant parallel tapping.
- Low noise operation.
- Long reach enables large workpieces to be tapped with ease.
- Blind and through hole tapping.
- Simple operation.
- Adjustable angle head option available.



Included;
Mounting base,
Articulated arm,
Pneumatic motor,
Quick change chuck,
Air regulator & gauge,
Air filter (with auto drain),
Air line lubricator.

Collets are not included.
Please see collet section for more details.



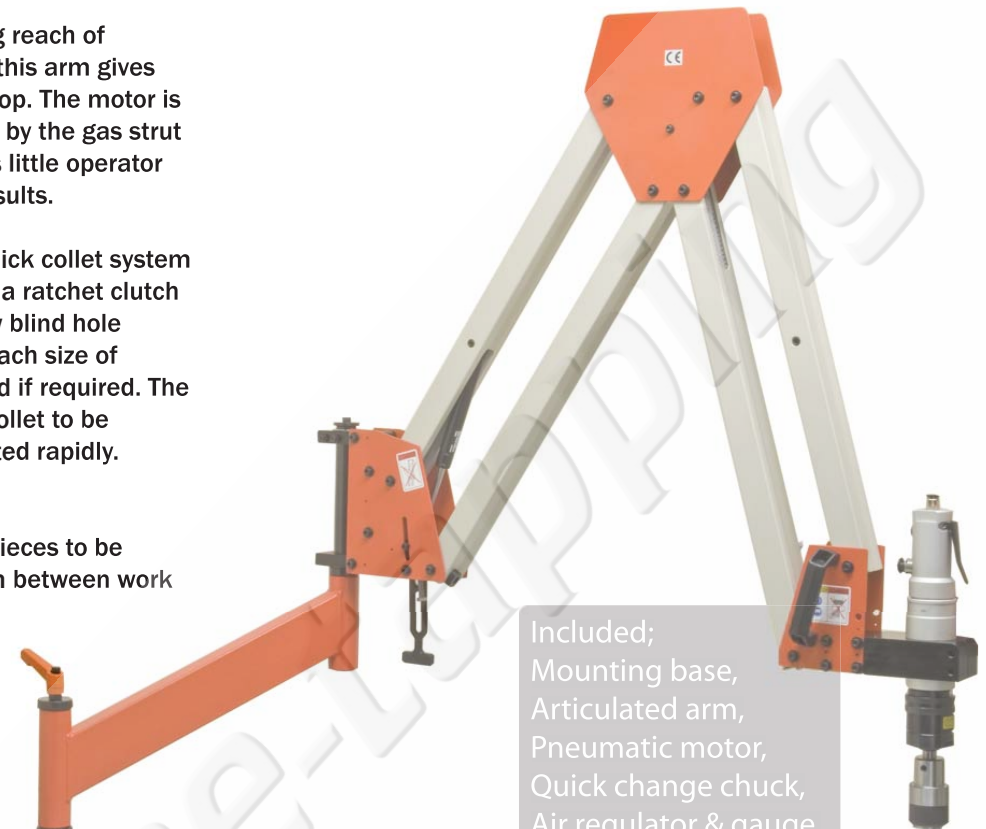
Model Number	Tapping Range	Work Area (mm)		RPM	Collet Type	Weight (Kg)
		Min	Max			
TA-1600-8	M2 to M8	500	1600	700	Type 1	19
TA-1600-12	M3 to M12	500	1600	400	Type 1	19
TA-1600-16	M5 to M16	500	1600	300	Type 2	24
TA-1600-22	M5 to M22	500	1600	120/300	Type 2	24

TA 1900 - Series

The TA 1900 series with a working reach of 1900mm. The extra reach of this this arm gives extra versatility in the machine shop. The motor is held rigid and is counter balanced by the gas strut mounted in the arm. This provides little operator fatigue and ensures consistant results.

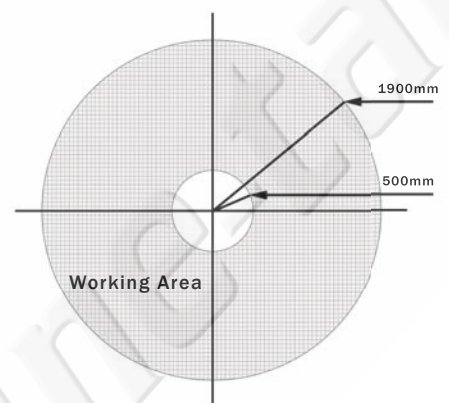
The machine taps are held in a quick collet system pneumatic motor. Each collet has a ratchet clutch to prevent tap breakage and allow blind hole tapping. The torque is preset for each size of tapping collet, this can be adjusted if required. The quick release system allows the collet to be removed and the next collet inserted rapidly.

- 1900mm reach.
- Long reach enables large workpieces to be tapped with ease or share the arm between work stations.
- Reduce tap breakage.
- Removes tapping operations from machine tools.
- Low maintenance.
- Consistant parallel tapping.
- Low noise operation.
- Blind and through hole tapping.
- Simple operation.
- Adjustable angle head option available.



Included;
Mounting base,
Articulated arm,
Pneumatic motor,
Quick change chuck,
Air regulator & gauge,
Air filter (with auto drain),
Air line lubricator.

Collets are not included.
Please see collet section for more details.



Model Number	Tapping Range	Work Area (mm)		RPM	Collet Type	Weight (Kg)
		Min	Max			
TA-1900-16	M5 to M16	500	1900	300	Type 2	30
TA-1900-22	M5 to M22	500	1900	120/300	Type 2	32

TYPE 1 - Collets

DIMENSIONS - mm

Type 1 Tap Collets

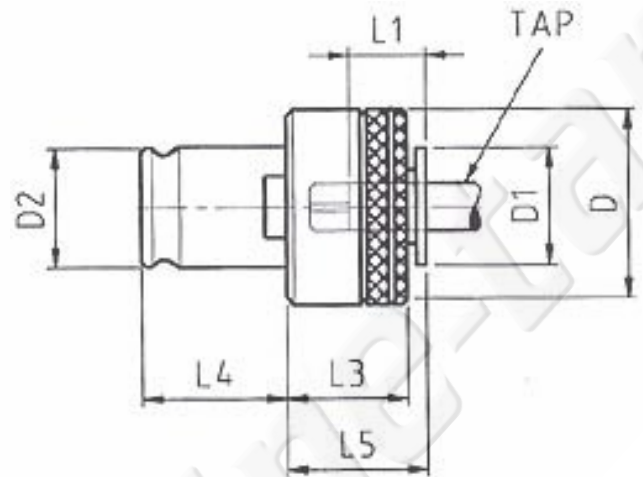
The tap collets have a ratchet clutch, the torque is preset for each tap size. If the tap encounters an obstruction the clutch will prevent the tap from turning. Through hole and blind holes can be tapped.

The ratchet clutch is preset, removing the need to make any adjustments when changing between tapping size.

- Quick change tap collet.
- ISO and DIN standard available.
- Ratchet clutch to prevent tap breakage.
- Adjustable torque, set level suitable for the material being tapped.
- Full range of metric and imperial collets.



Model Number	Tap Dimensions (ISO 529)		
	Size	Shank	Square
TA-CO-T1-M3	M3	3.15	2.5
TA-CO-T1-M4	M4	4	3.15
TA-CO-T1-M5	M5	5	4
TA-CO-T1-M6	M6	6.3	5
TA-CO-T1-M8	M8	8	6.3
TA-CO-T1-M10	M10	10	8
TA-CO-T1-M12	M12	9	7.1



Collet Type	D	D1	D2	L1	L3	L4	L5
Type 1	32	19	19	17	25	21.5	25

Compatible with the following equipment

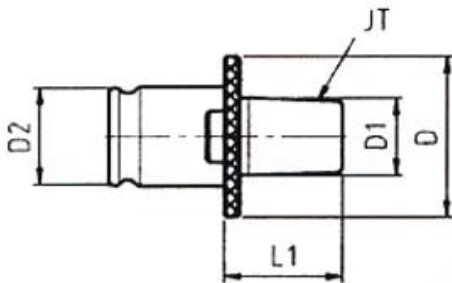
- TA-3-12
- TA-950-12
- TA-1600-12
- TA-1900-12
- TA-950-8
- TA-1600-8
- TA-1900-8
- TA-1900-12
- TA-CH-T1-MT2T
- TA-CH-T1-JT2S (JT6S)

TYPE 1 - Collet Adaptors

DIMENSIONS - mm

Type 1 Collet with Jacobs JT2 Chuck Adaptor

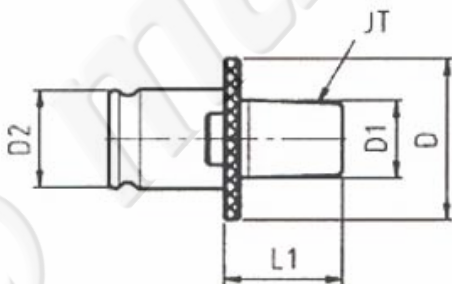
- Suitable for Jacobs taper number 2.
- Suitable for tapping arms with up to M12 tapping range.



Model Number	Collet Type	JT	D	D1	D2	L1
TA-CO-T1-JT2	Type 1	2	30	13.94	19	31

Type 1 Collet with Jacobs JT6 Chuck Adaptor

- Suitable for Jacobs taper number 6.
- Suitable for tapping arms with a tapping range between M16 and M27.



Model Number	Collet Type	JT	D	D1	D2	L1
TA-CO-T1-JT6	Type 1	6	30	17.17	19	34

TYPE 2 - Collets

DIMENSIONS - mm

Type 2 Tap Collets

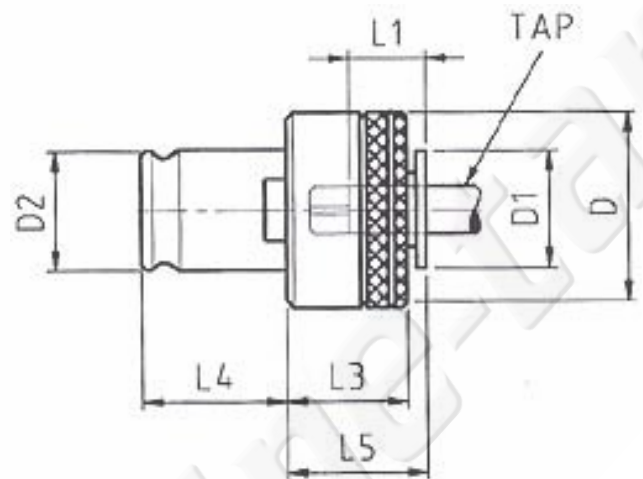
The tap collets have a ratchet clutch, the torque is preset for each tap size. If the tap encounters an obstruction the clutch will prevent the tap from turning. Through hole and blind holes can be tapped.

The ratchet clutch is preset, removing the need to make any adjustments when changing between tapping size.

- Quick change tap collet.
- ISO and DIN standard available.
- Ratchet clutch to prevent tap breakage.
- Adjustable Torque, set level suitable for the material being tapped.
- Full range of metric and imperial collets.



Model Number	Tap Dimensions (ISO 529)		
	Size	Shank	Square
TA-CO-T2-M5	M5	6	4.9
TA-CO-T2-M6	M6	6.3	5
TA-CO-T2-M8	M8	8	6.3
TA-CO-T2-M10	M10	10	8
TA-CO-T2-M12	M12	9	7.1
TA-CO-T2-M14	M14	11.2	9
TA-CO-T2-M16	M16	12.5	10
TA-CO-T2-M18	M18	14	11.2
TA-CO-T2-M20	M20	14	11.2
TA-CO-T2-M22	M22	16	12.5
TA-CO-T2-M24	M24	18	14
TA-CO-T2-M26	M27	20	16



Collet Type	D	D1	D2	L1	L3	L4	L5
Type 2	50	30	31	30	31	35	33

Compatible with the following equipment

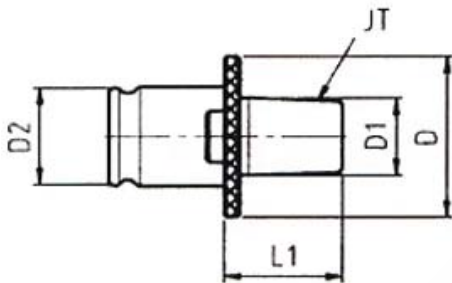
- TA-1000-16
- TA-1000-22
- TA-1000-27
- TA-1600-16
- TA-1600-22
- TA-1900-16
- TA-1900-22
- TA-CH-T2-MT3T
- TA-1900-12
- TA-CH-T2-JT6S

TYPE 2 - Collet Adaptors

DIMENSIONS - mm

Type 2 Collet with Jacobs JT6 Chuck Adaptor

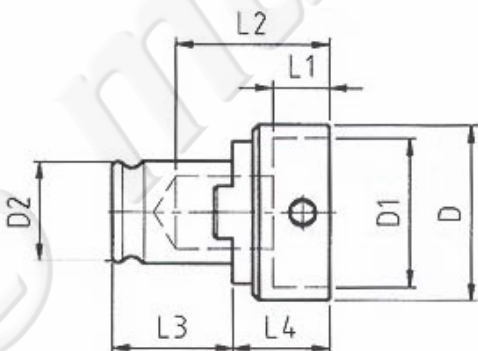
- Suitable for Jacobs taper number 6.
- Suitable for tapping arms with a tapping range between M16 and M27.



Model Number	Collet Type	JT	D	D1	D2	L1
TA-CO-T2-JT6	Type 2	6	48	17.17	31	37

Type 2 to Type 1 Collet Adaptor

- Converts Type 2 chuck to use Type 1 Collets.
- Suitable for tapping arms with a tapping range between M16 and M27.



Model Number	Collet Type	D	D1	D2
TA-CO-T2-T1	Type 2	48	19	31

Quick Change Tooling

A range of quick change collet chucks with morse taper shanks. Compatible with our range of tapping collets and drill chuck adaptors. Allowing fast tool changing between drill chuck and machine tap. To change tooling, lift outer locking ring to eject the collet. Align new collet and release locking ring.



- Simple to fit to machine tools.
- Collets available with torque clutch.
- Fast tool changes.
- Drill chuck adaptor collets available.

Model Number		Collet Type
TA-CH-T1-MT2T	Type 1 chuck to morse taper 2 arbour.	Type 1
TA-CH-T2-MT3T	Type 2 chuck to morse taper 3 arbour.	Type 2

A range of quick change collet chucks with jacob tapers. Compatible with our range of tapping collets and drill chuck adaptors. Allowing fast tool changing between drill chuck and machine tap. To change tooling, lift outer locking ring to eject the collet. Align new collet and release locking ring.



- Simple to fit to machine tools.
- Collets available with torque clutch.
- Fast tool changes.
- Drill chuck adaptor collets available.

Model Number		Collet Type
TA-CH-T1-JT2S	Type 1 chuck to jacobs 2 taper	Type 1
TA-CH-T1-JT6S	Type 1 chuck to jacobs 6 taper	Type 1
TA-CH-T2-JT6S	Type 2 chuck to jacobs 6 taper	Type 2

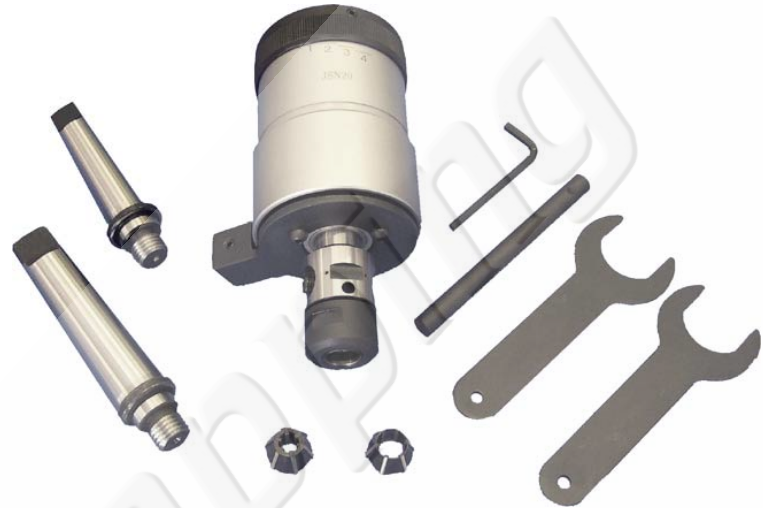
Auto-Reversing Tapping Heads

The auto reversing tapping head attachments for use with drilling or milling machines with a manual quill. Mounting to the machine spindle using a suitable arbor, start the machine and lower the quill. When the tap has engaged the hole, the tap will pull down and cut the thread. When the tap has reached the bottom of the hole or the quill is retracted, the internal mechanism will engage and reverse the tapping direction.

There are three sizes of tapping head is capable of tapping M2 to M7, M5 to M12 and M8 to M20. The tapping heads have adjustable torque settings to prevent tap breakage. Utilizing a large knurled knob to easily adjust the torque, which is also numbered for convenience.

Employing a chatter-free clutch with a unique double spring design. This allows automatic disengagement of forward drive and smooth engagement of reverse drive. The reverse drive will retract the tap faster than the forward drive, considerably increasing production. The tapping head mechanism has a cushioned drive providing a self-feed action, ensuring pitch perfect threads.

The cushion drive easily allows a pre-tapped hole to be re-aligned, eliminating cross threading. The collet chuck on the head uses round rubber flex collets to adjust size and locate the tap. Other taps including Imperial can be used if they are within the metric size range, of the tapping head. The rear square end of the tap is held by a self centring two-jaw clamping plate, which also provides the main drive to the tap when in operation.



Model Number	Tapping Range	Dimensions		Tapping Head Taper	Supplied Arbors	Head Weight (Kg)
		Diameter	Length			
MT-TH-2-7	M2 to M7	55	120	JT6	MT1 & MT3	1.1
MT-TH-5-12	M5 to M12	75	150	JT6	MT3 & MT4	2.4
MT-TH-8-20	M8 to M20	90	195	20mm thread	MT3 & MT4	4.6

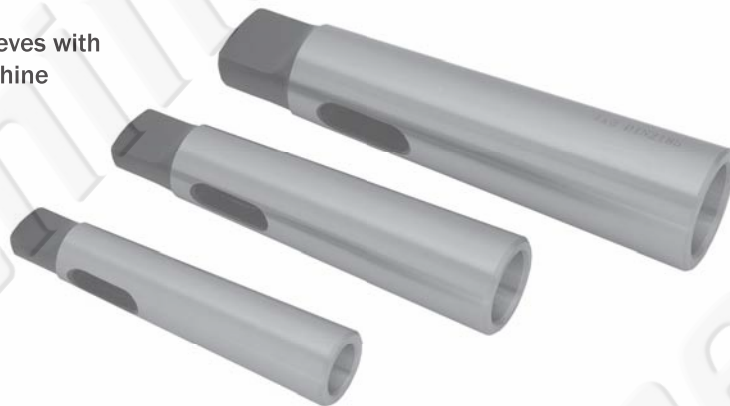
Arbors and Sleeves



Precision ground hardened and tempered arbors with tang. Morse taper shank to Jacobs chuck tapers. Compatible with the M2-M7 and M5-M12 tapping head.

Part Number		Weight
MT-AB-MT1-JT6	Morse taper 1 (MT1) - Jacobs 6 (JT6)	98g
MT-AB-MT2 -JT6	Morse taper 2 (MT2) - Jacobs 6 (JT6)	172g
MT-AB-MT3-JT6	Morse taper 3 (MT3) - Jacobs 6 (JT6)	352g
MT-AB-MT4-JT6	Morse taper 4 (MT4) - Jacobs 6 (JT6)	634g
MT-AB-R8-JT6	R8 taper - Jacobs 6 (JT6)	426g

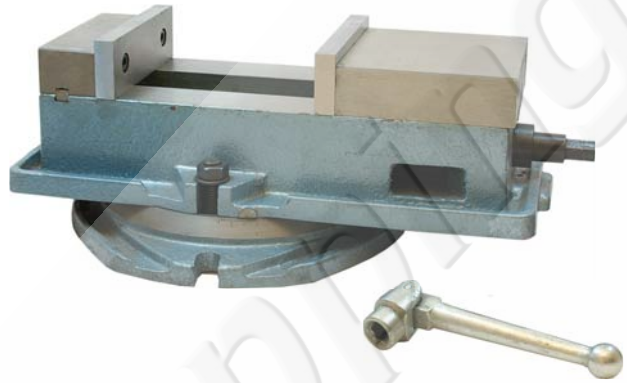
Precision ground morse taper sleeves with a tang. Reduce taper size of machine spindles.



Part Number		Weight
MT-SL-MT2-MT1	Morse 2 (MT2) - Morse 1 (MT1)	96g
MT-SL-MT3-MT2	Morse 3 (MT2) - Morse 3 (MT1)	182g
MT-SL-MT4-MT3	Morse 4 (MT2) - Morse 4 (MT1)	391g

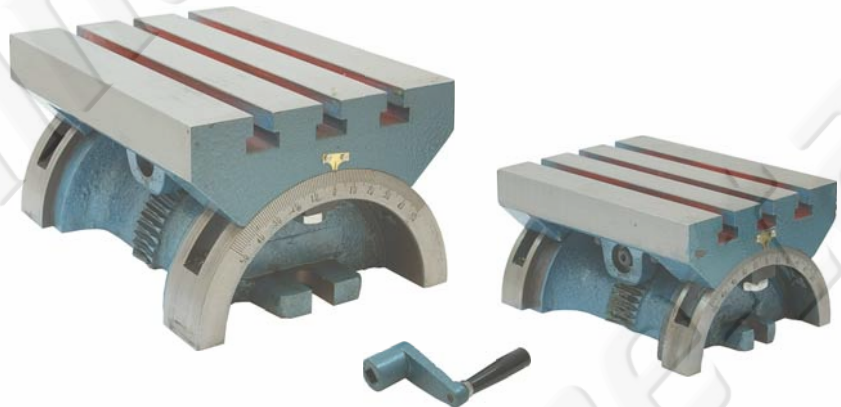
Work Holding and Angle Plates

Heavy duty 5" machine vice with swivel base. Hardened, ground slides and jaws. The removable can be fitted in three positions, allowing wide work pieces to be held.



Model Number	Jaw Width	Overall (mm)		Jaw Height	Standard Opening	Weight
		height	Length			
MT-VC-5	127mm (5")	138mm	360mm	41mm (1 5/8")	137mm (5 3/8")	21.5 Kg

Precision ground tilting tables.



Model Number	Angle Adjustment	Table Size (mm)		Table Height	Number of Tee Slots	Weight
		Width	Length			
MT-TT-7	0 +/- 50°	131mm	180mm	94mm	3	7 Kg
MT-TT-10	0 +/- 50°	181mm	258mm	132mm	3	19 Kg

